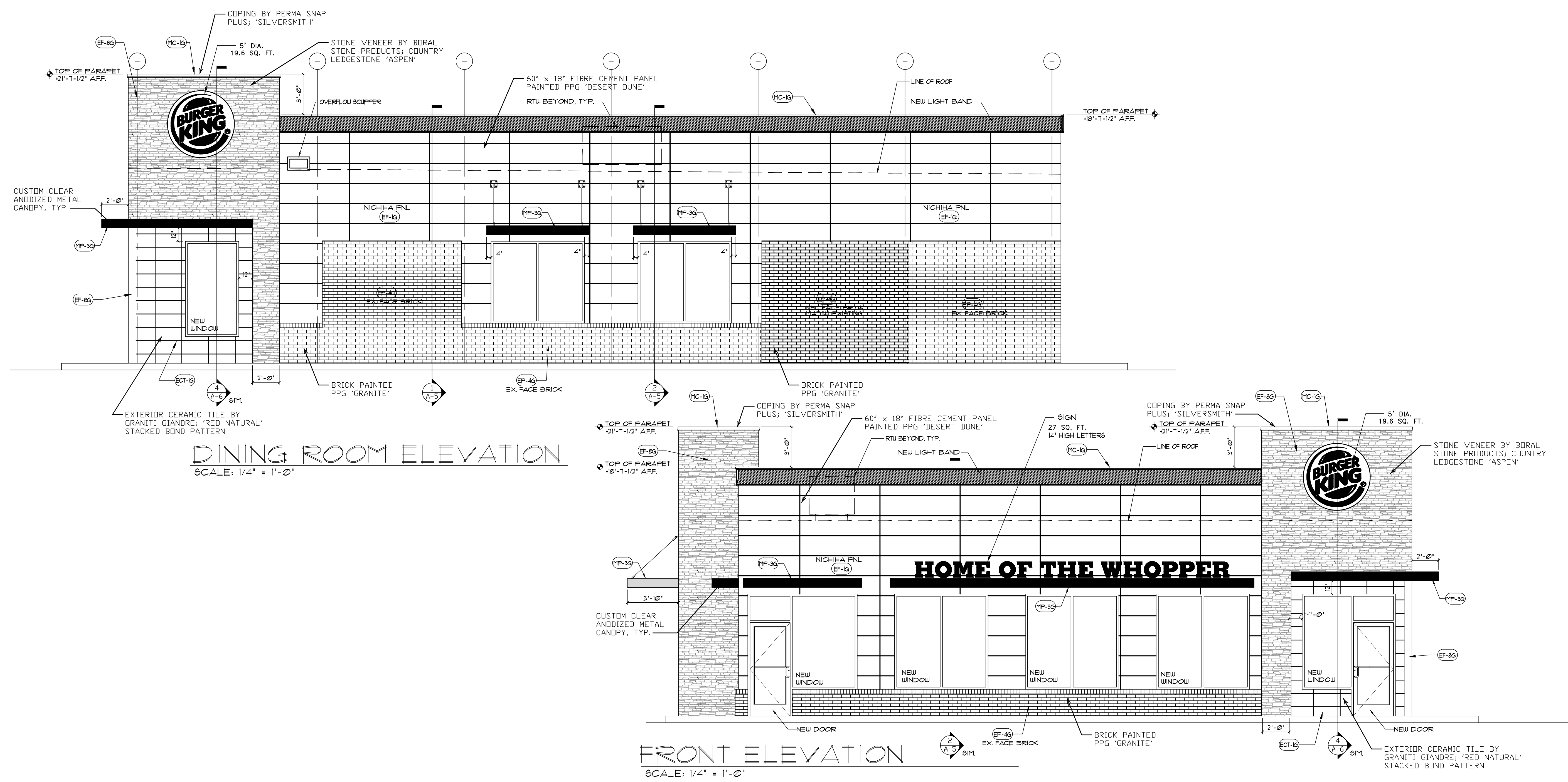


NOTE: BUILDING HEIGHT FROM GRADE TO TOP OF ELEMENT IS 21'-1-1/2"



CLS# 1032 BK# 1366

-	REISSUED FOR PLANNING REVIEW	06.18.20
-	ISSUED FOR PLANNING REVIEW	04.21.20
3	PER OWNER COMMENTS	03.24.20
2	PER OWNER COMMENTS	03.16.20
1	PER OWNER COMMENTS	03.04.20

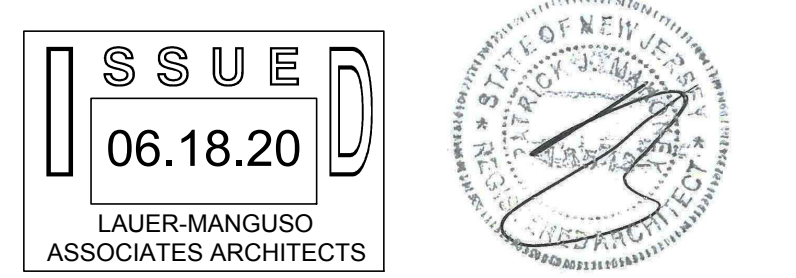
No.	Description	Date
	- REVISIONS	

BURGER KING
317 MAIN STREET
MADISON, NJ 07940

CARROLLS, LLC
SYRACUSE, NEW YORK

EXTERIOR ELEVATIONS

PROFESSIONAL CERTIFICATION.
I certify that these documents were prepared or approved by me, and that I am a duly licensed architect under the laws of the State of New Jersey, license number 18548.



LAUER-MANGUSO & ASSOCIATES ARCHITECTS
4080 Ridge Lea Road
Buffalo, N.Y. 14228
(716) 837-0833

Date: 03.04.2020 Drawing No. A-3.1
Drawn By: CJP
Checked By: JWM
Job Number: 19045

BURGER KING - 20/20 GARDEN GRILL EXTERIOR
EXTERIOR MATERIALS & FINISH SCHEDULE (not all specs are used on every project)

CODE	MATERIAL	LOCATION	MANUFACTURER	DESCRIPTION	ADDITIONAL INFORMATION
ECT-1G	EXTERIOR CERAMIC TILE	ACCENT AT BUILDING FRONT	GRANITI GIANDRE / EUROWEST	SENSIBLE STONE ED5052	CONTACT: JOY DETER AT EUROWEST (714) 309-9551 OR JOY KLEIN (813) 334-3302 jklein@transamerica.com NOTE: USE WITH EGR-4G CONTACT: TIM SALERNO AT STO CORP (407) 466-5371
EF-1G	EXTERIOR FINISH - STUCCO, STO, FIBER CEMENT SIDING PANELS	GENERAL	STO OR APPROVED EQUAL	STO POWERWALL STUCCO SYSTEM TEXTURE: FINE SAND OR STO THERM CI EIFS SYSTEM	COLOR TO MATCH EP-2G PPG "DESERT DUNE"
			NICHIHA FIBER CEMENT	NICHIHA TUFFBLOCK	PREPAINTED TO MATCH EP-2G - PPG "DESERT DUNE" STACKED BOND PATTERN
EF-8G (ALTERNATE FOR EF-9G)	EXTERIOR FINISH STONE	EXTERIOR SIGN ARCHONS	BORAL STONE PRODUCTS	COUNTRY LEDGESTONE	"ASPEN" CONTACT NICHHA CUSTOMER SERVICE (770) 805-9466 BK@NICHHA.COM INSTALL PER MANUFACTURER'S SPECIFICATIONS VERTICAL APPLICATIONS ONLY (NOT FOR USE ON SOFFITS) CONTACT: 800-255-1727 Diane.Clark@boral.com culturedstone@boral.com
EP-4G	EXTERIOR PAINT	EXTERIOR WAINSCOT		PRIMER: 17-921 PAINT: 6-2045XI	"GRANITE" 1022-6 = "MONTERREY CLIFFS" 10YY 14/080 (616) 335-3259 klastacy@ppg.com
MC-1G	METAL COPING	TOP OF LIGHT BAND WALL CAP		PERMA SNAP PLUS	A-30 "SILVERSMITH" CONTACT: W.P. HICKMAN COMPANY (828)676-1700 - WWW.WPH.COM
MP-1G		PARAPET LIGHT BAND	LEKTRON *SEE APPROVED SIGN SUPPLIERS	LED LIGHT BAND	*SEE PLANS PRODUCT INFORMATION: KEVIN RUBOTTOM AT LEKTRON (800) 634-4059 OR (918) 622-4978 Email: KRubottom@lektroninc.com
MP-3G	METAL CANOPY	ABOVE DOORS AND WINDOWS	*SEE APPROVED CANOPY SUPPLIERS	CUSTOM METAL CANOPY	COLOR: CLEAR ANODIZED *SEE PLANS

WARNING: It is a violation of State Law for any persons, unless acting under the direction of a Licensed Architect or Professional Engineer, to alter in any way, plans, specifications, or reports to which the seal of a Licensed Architect or Professional Engineer has been applied.

These documents and their contents are the property of LMA and are issued only for the specific project noted on these drawings. Any reproductions, revisions, or modifications of these documents without expressed written consent of LMA is prohibited by law.