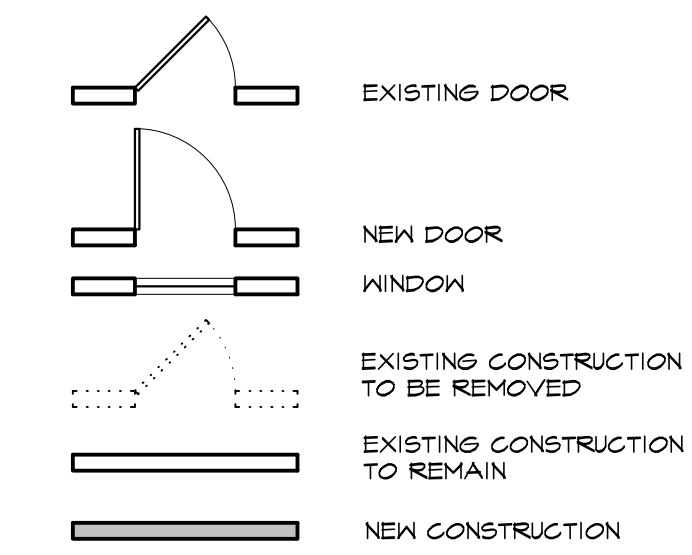


STANDARD SYMBOLS LEGEND



BUILDING INFORMATION
 MIXED-USE:
 BASEMENT AND MAIN LEVEL: B (BUSINESS)
 SECOND AND THIRD LEVEL: R-2 (RESIDENTIAL APARTMENTS)

AREA CHART	EXISTING	PROPOSED	TOTAL
LOWER LEVEL	1,380 S.F.	+0 S.F.	1,380 S.F.
MAIN LEVEL	1,745 S.F.	+534 S.F.	2,279 S.F.
SECOND LEVEL	0 S.F.	+2,227 S.F.	2,227 S.F.
THIRD LEVEL	0 S.F.	+1,726 S.F.	1,726 S.F.
TOTAL	3,125 S.F.	+4,487 S.F.	7,612 S.F.
BALCONY	0 S.F.	+351 S.F.	351 S.F.
BUILDING FOOTPRINT	1,754 S.F.	+534 S.F.	2,288 S.F.

USE AREA	BUSINESS	RESIDENTIAL UNIT 'A'	RESIDENTIAL UNIT 'B'	RESIDENTIAL UNIT 'C'	RESIDENTIAL COMMON SPACE
LOWER LEVEL	1,380 S.F.	0 S.F.	0 S.F.	0 S.F.	0 S.F.
MAIN LEVEL	2,165 S.F.	0 S.F.	0 S.F.	0 S.F.	114 S.F.
SECOND LEVEL	0 S.F.	1,022 S.F.	1,044 S.F.	0 S.F.	161 S.F.
THIRD LEVEL	0 S.F.	0 S.F.	0 S.F.	1,701 S.F.	25 S.F.
BALCONY	0 S.F.	0 S.F.	0 S.F.	351 S.F.	0 S.F.
TOTAL	3,545 S.F.	1,022 S.F.	1,044 S.F.	2,052 S.F.	300 S.F.

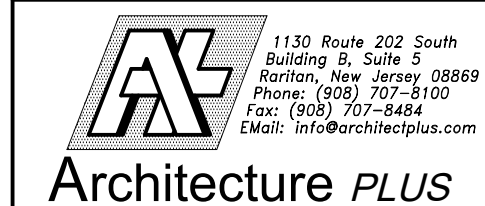
PROJECT DESCRIPTION:
 PROPOSED ADDITION AND CHANGE OF USE OF EXISTING 1-STORY BUSINESS TO 3-STORY MIXED USE BUSINESS AND RESIDENTIAL APARTMENTS.
 MAIN LEVEL ADDITION AND ALTERATION TO INCLUDE EXPANDED BUSINESS TENANT SPACE (BATHROOM LAYOUT TO BE DETERMINED AT TENANTING), NEW BUSINESS EGRESS HALLWAY, AND NEW RESIDENTIAL COMMON SPACE INCLUDING NEW MEANS OF EGRESS.
 SECOND LEVEL ADDITION TO INCLUDE (2) NEW APARTMENTS WITH (2) BEDROOMS AND (1) BATH, AS WELL AS RESIDENTIAL COMMON SPACE INCLUDING NEW MEANS OF EGRESS.
 THIRD LEVEL ADDITION TO INCLUDE (1) NEW APARTMENT WITH (3) BEDROOMS AND (2) BATHS AND PRIVATE BALCONY, AS WELL AS RESIDENTIAL COMMON SPACE INCLUDING NEW MEANS OF EGRESS.

OWNER INFORMATION:
 16 WAVERLY PLACE, LLC

GENERAL REVISIONS	8-5-19
REVISION	DATE

PLANS AND ELEVATIONS

CHANGE OF USE/ADDITION
 16 WAVERLY PLACE
 LOT 28, BLOCK 2102
 16 WAVERLY PLACE
 MADISON, NJ 07140



1133 Route 202 South
 Building 10, Suite 3
 Marlton, New Jersey 08059
 Phone: (609) 707-8100
 Fax: (609) 707-8484
 Email: info@archplus.com

Recco Campanella, RA NJ Reg. No. 09178
 NY Reg. No. 019838
 PA Reg. No. B-11734

Marc T. Marlon, RA NJ Reg. No. 10919
 © 2019 Architecture PLUS, pc

SCALE : AS NOTED
 DRWN BY : ER CHK BY : KK
 DATE : 4-15-19
 PROJ. NO. : 18-174
 DWG. NO. : PBI of 1

