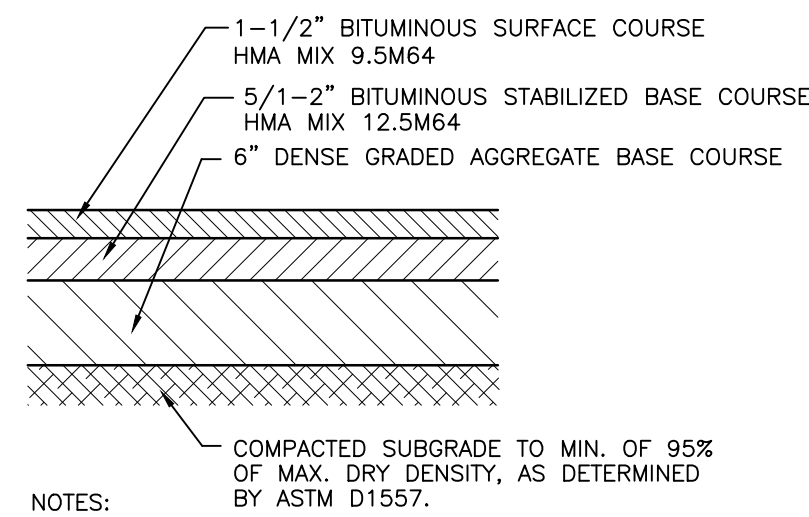


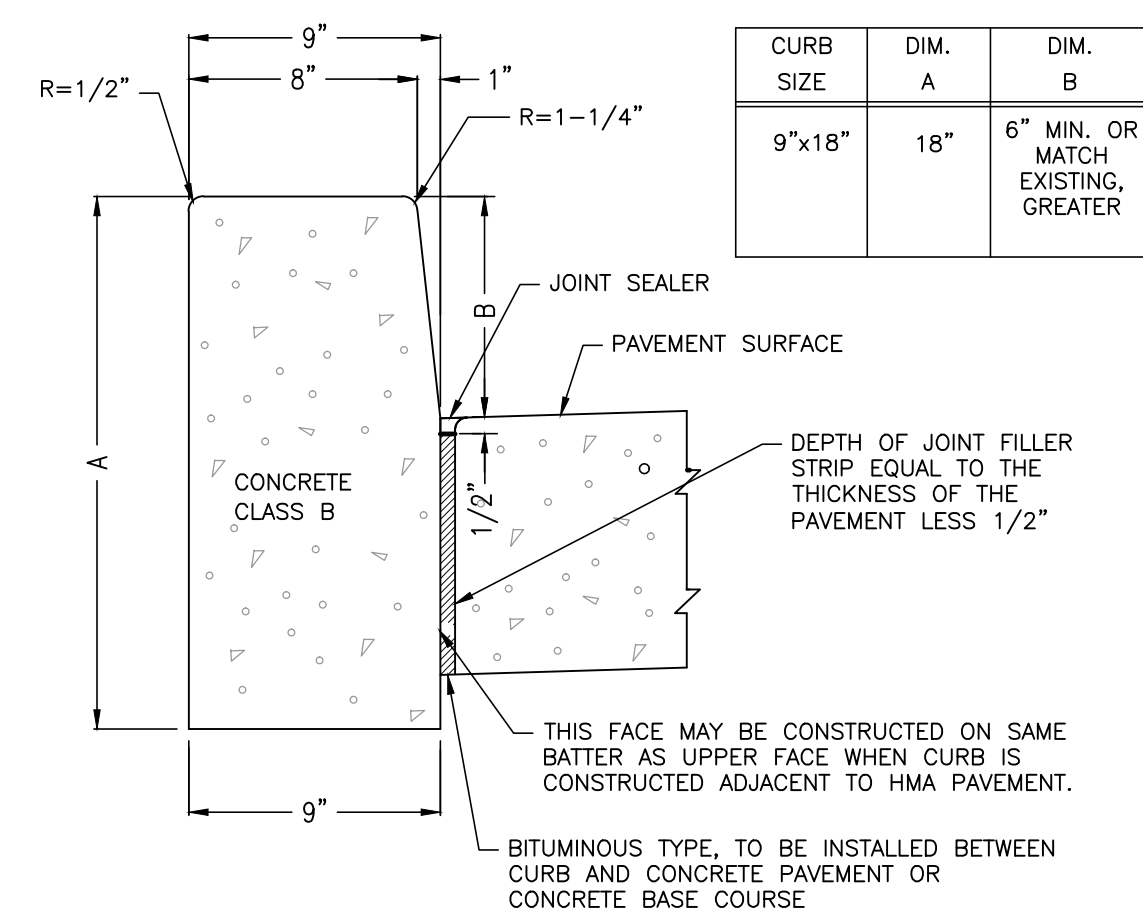
NOTES:  
1. PAVEMENT MATERIALS AND CONSTRUCTION SHALL FOLLOW NJDOT SPECIFICATIONS FOR ROAD AND BRIDGE CONSTRUCTION, LATEST EDITION AS SUPPLEMENTED.

**ON-SITE PAVEMENT REPAIR SECTION**  
N.T.S.



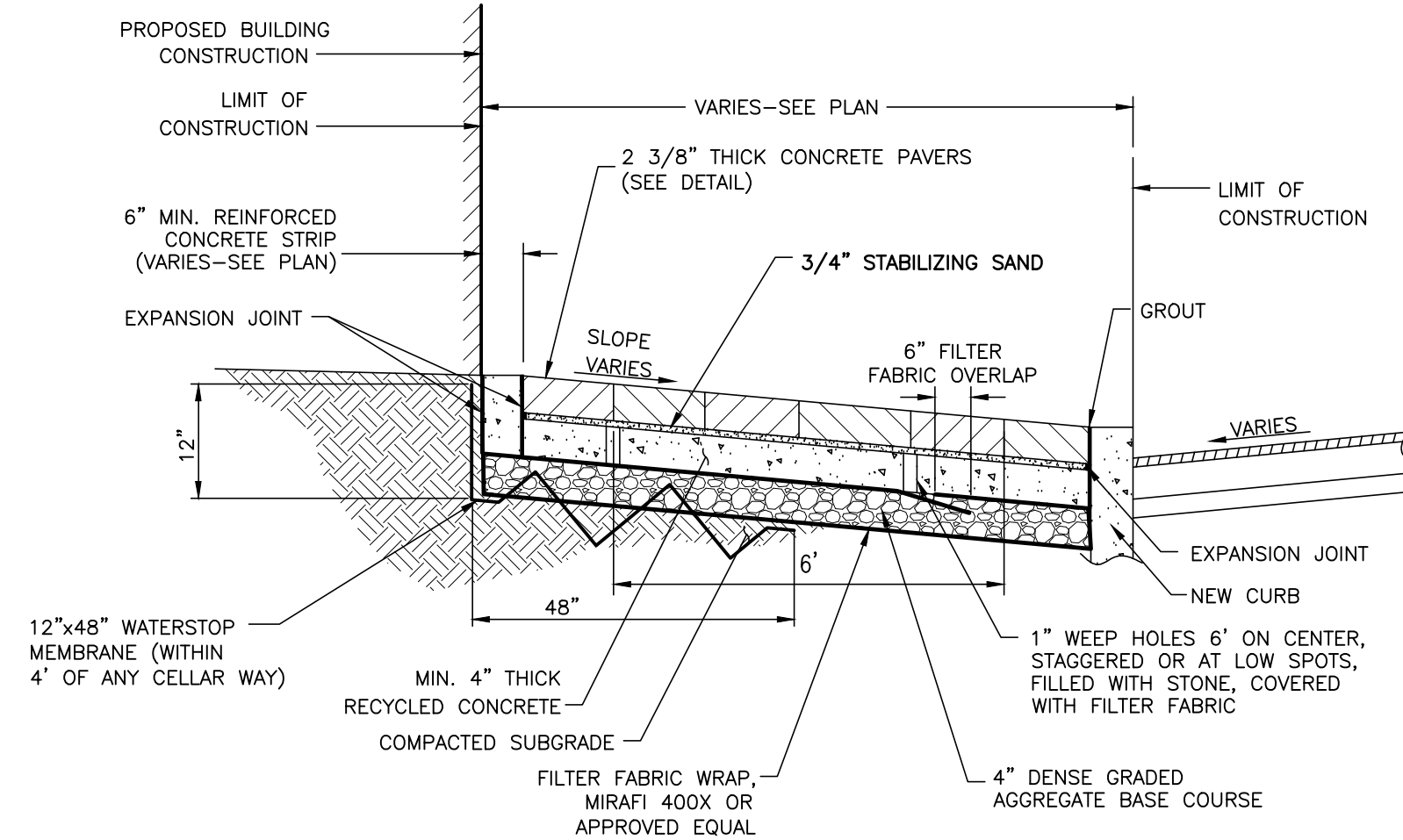
NOTES:  
1. PAVEMENT MATERIALS AND CONSTRUCTION SHALL FOLLOW NJDOT SPECIFICATIONS FOR ROAD AND BRIDGE CONSTRUCTION, LATEST EDITION AS SUPPLEMENTED.

**WAVERLY PLACE PAVEMENT REPAIR SECTION**  
N.T.S.

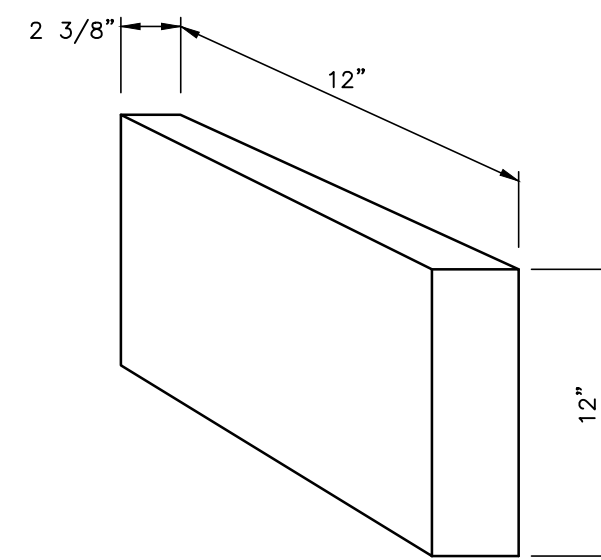


NOTES:  
1. TRANSVERSE JOINTS 1/2" WIDE SHALL BE INSTALLED IN THE CURB 20 FEET APART AND SHALL BE FILLED WITH PREFORMED BITUMINOUS-IMPREGNATED FIBER JOINT FILLER, COMPLYING WITH THE REQUIREMENTS OF AASHTO M-213, RECESSED 1/4" FROM THE FRONT FACE AND TOP OF THE CURB.  
2. EXPANSION JOINTS THRU AND ADJACENT TO THE CURB SHALL BE INCLUDED IN THE UNIT PRICE BID FOR CURB.

**REPAIR SECTION FOR WAVERLY PLACE CONCRETE/WHITE CONCRETE VERTICAL CURB**  
N.T.S.

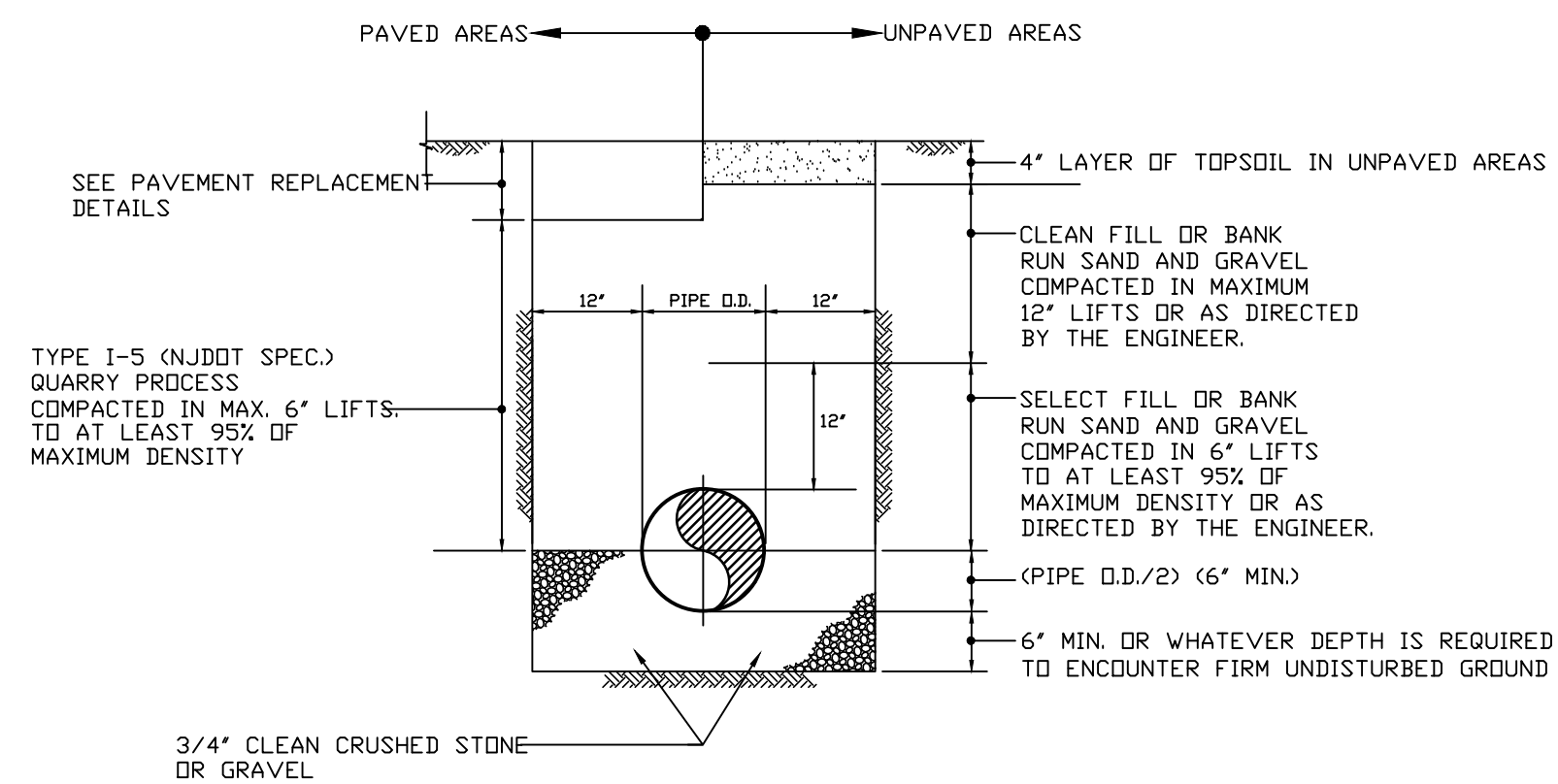


**CONCRETE PAVER SIDEWALK REPAIR SECTION**  
N.T.S.



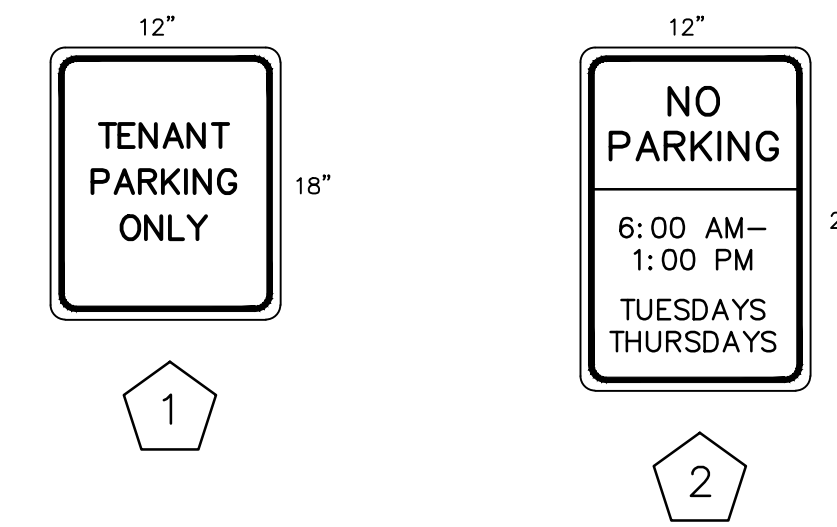
NOTES:  
1. PROVIDE IF EXISTING PAVERS ARE DAMAGED DURING WATER LINE INSTALLATION OR SIGN REMOVAL.  
2. PAVER SHALL BE 12"x12" PLAZA PAVER, MANUFACTURED BY GRINNELL PAVING STONES, INC., COLOR: WAVERLY TAN. CONTACT MADISON BOROUGH PUBLIC WORKS DEPT. FOR MORE INFORMATION.

**CONCRETE PAVER DETAIL**  
N.T.S.



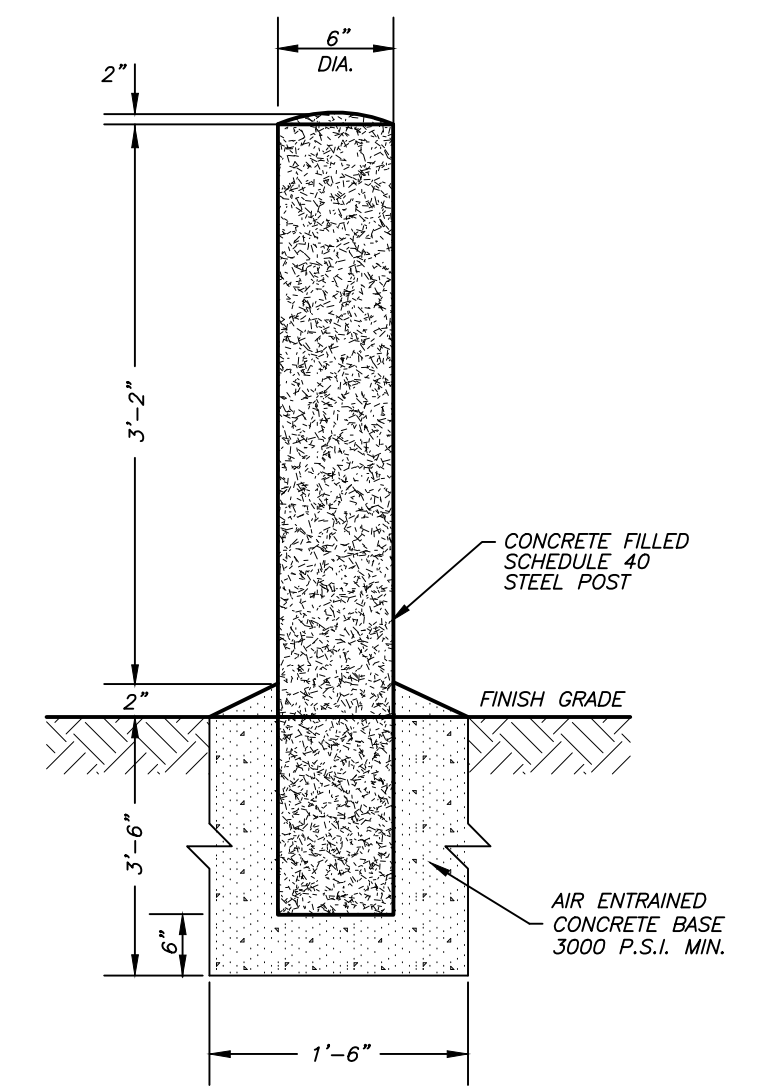
NOTES:  
1. LIMITS OF TRENCH TO BE CUT TO A NEAT EDGE AND TACK COATED PRIOR TO PATCHING.

**SURFACE RESTORATION AND TRENCH DETAIL FOR DUCTILE IRON PIPE**  
N.T.S.



NOTES:  
1. DAYS & HOURS TBD FOR SIGN NO. 2.

**WALL-MOUNTED SIGN LEGEND**  
N.T.S.



**BOLLARD DETAIL**  
N.T.S.

PLANNING BOARD APPLICATION NO. P-19-005

REVISION NO.	DATE	REVISION
1	11/19/19	REVISED PER BOROUGH COMMENTS OF SEPT. 17, 2019.

**CONSTRUCTION DETAILS  
PRELIMINARY & FINAL SITE PLAN  
16 WAVERLY PLACE LLC**

SITUATED AT  
16 WAVERLY PLACE - TAX BLOCK 2702, LOT 28  
BOROUGH OF MADISON MORRIS COUNTY NEW JERSEY

-NOTICE-

THIS DRAWING AND ALL INFORMATION CONTAINED HEREIN IS AUTHORIZED FOR USE ONLY BY THE PARTY FOR WHOM THE WORK WAS CONTRACTED OR TO WHOM IT IS CERTIFIED.  
THIS DRAWING MAY NOT BE COPIED, REUSED, DISCLOSED, DISTRIBUTED OR RELED UPON FOR ANY OTHER PURPOSE WITHOUT THE WRITTEN CONSENT OF KORZEN ENGINEERING, LLC  
COPYRIGHT 2019 KORZEN ENGINEERING, LLC ALL RIGHTS RESERVED

**PETER K. KORZEN**  
PROFESSIONAL ENGINEER &  
LAND SURVEYOR, N.J. LIC. No. 24GB03585000

**KORZEN Engineering**  
Civil Engineering & Land Surveying

26 BERKSHIRE STREET  
WHIPPANY, N.J. 07881  
TEL (973) 884-9300  
FAX (973) 884-9530

N.J. CERTIFICATE OF AUTHORIZATION NO. 24GA28107900

PROJECT NO.  
190105  
SCALE  
N.T.S.  
DATE  
4/04/2019  
FB / PG  
SHEET NO.  
4 of 4