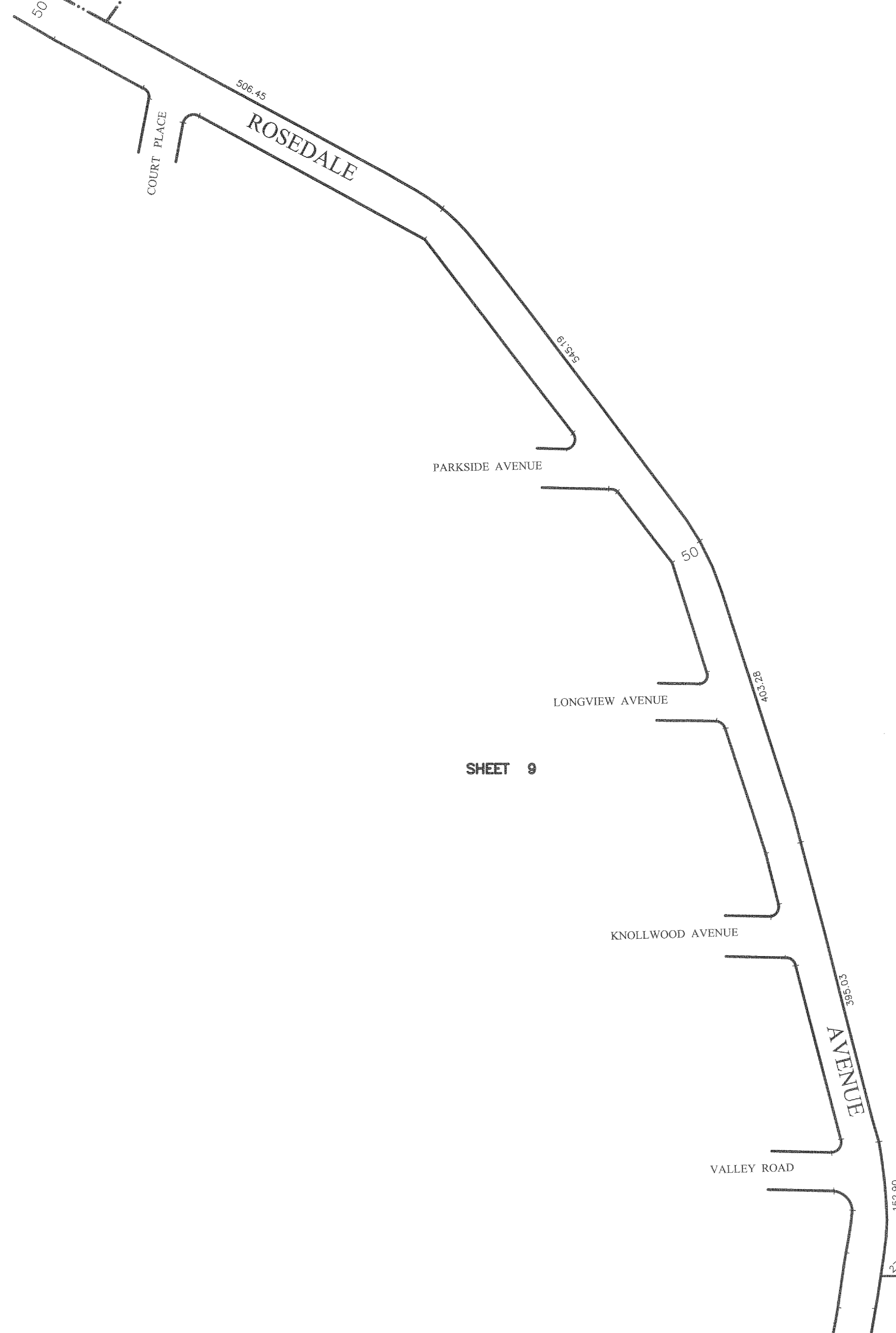
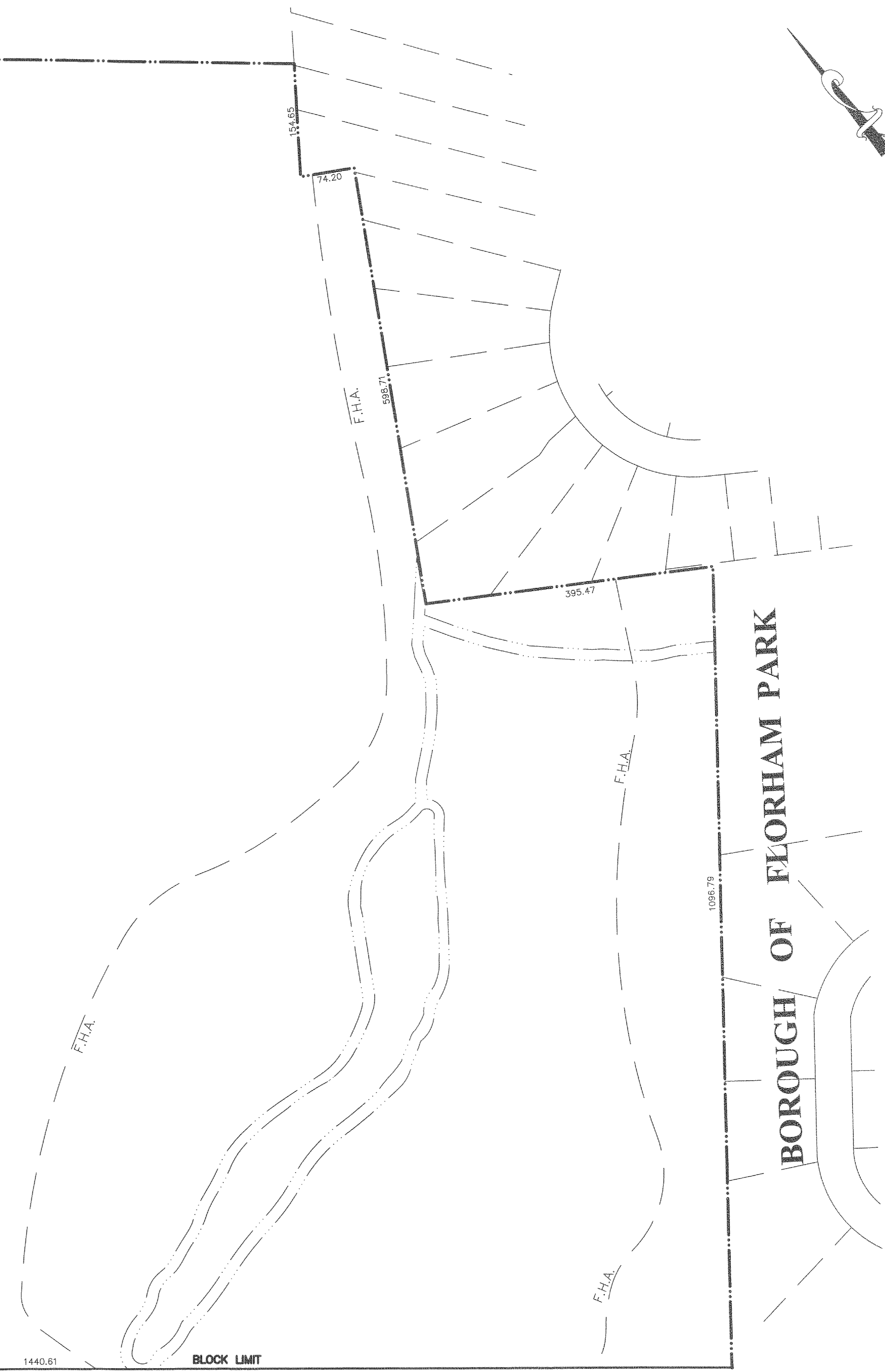


**BOROUGH OF  
FLORHAM  
PARK**



SHEET 9

1  
64.77 ACRES  
FHA 16.1 AC(S)  
EXEMPTED  
MEMORIAL PARK  
BORO OF MADISON  
**5001**



SHEET 22

BLOCK LIMIT

**TAX MAP**  
BOROUGH OF MADISON  
MORRIS COUNTY, NEW JERSEY  
SCALE: 1"=100' DATE: 5-2-07

**RICHARD F. SMITH, JR.**  
PROFESSIONAL LAND SURVEYOR NO. 24GS02504800  
28 SCHUYLER PLACE  
MORRISTOWN, NJ 07960

MAINTENANCE AND SUPERVISION OF TAX  
MAPS FOR THE BOROUGH PRIOR TO JANUARY  
2016 WAS PERFORMED BY RICHARD F. SMITH, PLS.  
BEGINNING IN JANUARY 2016, MAINTENANCE AND  
SUPERVISION WAS PERFORMED BY  
ANDREW B. CLARKE, P.L.S., P.E. GBO4105600

NOTES:  
1. THIS SHEET HAS BEEN DRAWN USING COMPUTER AIDED DRAFTING/DESIGN.  
2. THIS SHEET IS A DIGITIZED COPY OF THE TAX MAP PREPARED  
BY RICHARD F. SMITH, JR. AND DATED 5-2-07 THE  
APPROVED ORIGINAL IS ON FILE IN THE ENGINEER'S OFFICE.

NO.	REVISION	DATE	BY	APP'D
1	ANDREW CLARKE, PLS & PE - GENERAL REVIEW	5/4/18	D.C.B.	A.B.C.

DIVISION OF TAXATION,  
SIGNED BY:  
RICHARD F. SMITH, JR.,  
APPROVED BY:  
SUE DAVISON, CTA  
FEBRUARY 13, 2012, SERIAL # 921.

\\storagesrv1\Engineering\CAD Files\2015 TAX MAP ANDREW CLARK.LS\050.dwg, Layout2, 5/14/2018, 10:52:12 AM, KIP-3000 Series