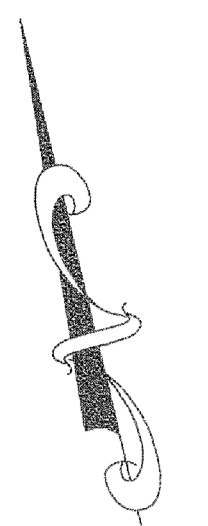


MATCH LINE  
SEE SHEET 31

SHEET 30

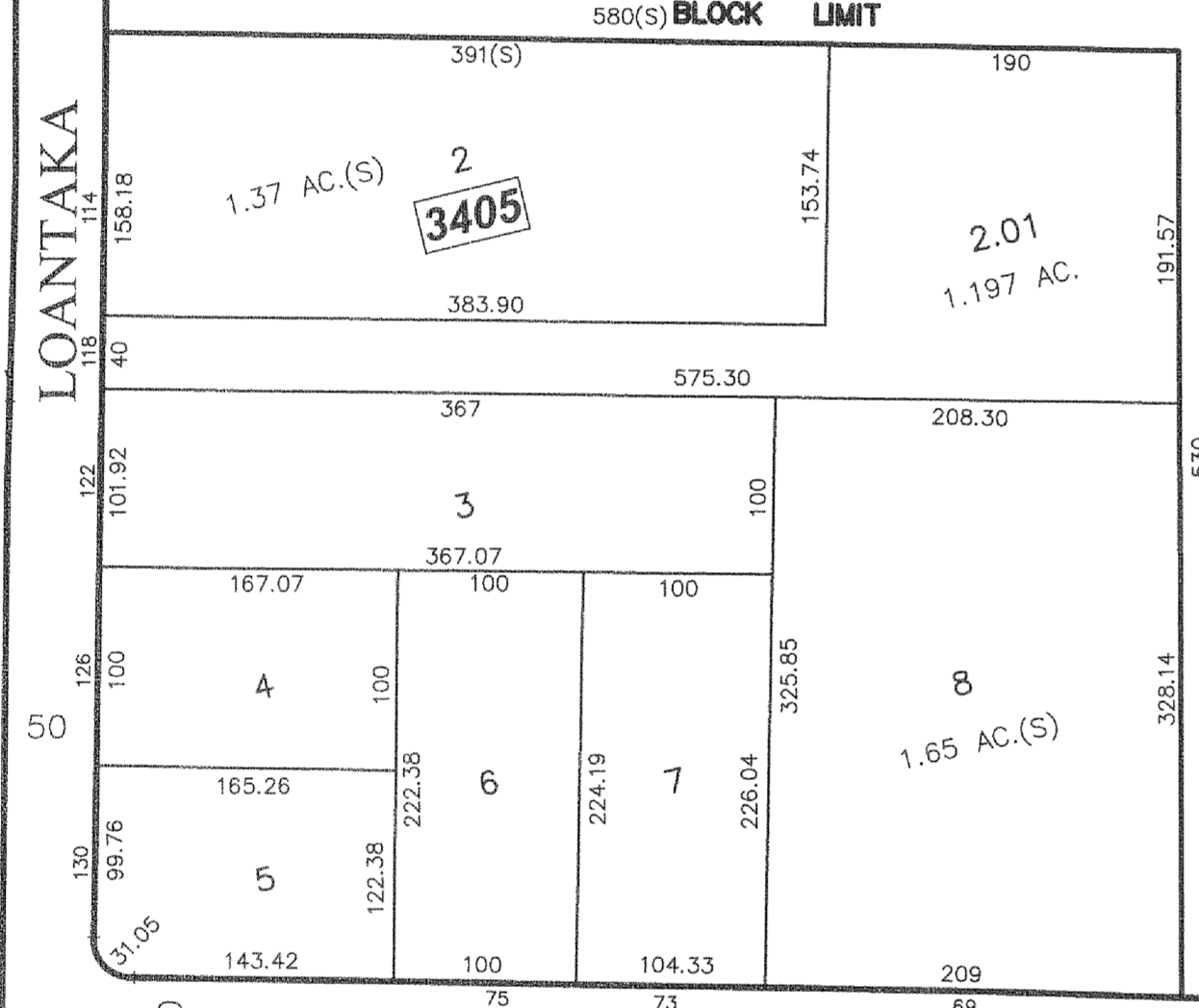


1  
TOTAL AREA BY DEED 100 ACRES  
EXEMPTED  
DREW UNIVERSITY  
3001



WAY  
LOANTAKA

SHEET 32



SHEET 35

MAINTENANCE AND SUPERVISION OF TAX  
MAPS FOR THE BOROUGH PRIOR TO JANUARY  
2016 WAS PERFORMED BY RICHARD F. SMITH, PLS.  
BEGINNING IN JANUARY 2016, MAINTENANCE AND  
SUPERVISION WAS PERFORMED BY  
ANDREW B. CLARKE, P.L.S., P.E. GB04105600

NOTES:  
1. THIS SHEET HAS BEEN DRAWN USING COMPUTER AIDED DRAFTING/DESIGN.  
2. THIS SHEET IS A DIGITIZED COPY OF THE TAX MAP PREPARED  
BY RICHARD F. SMITH, JR. AND DATED 5-2-07. THE  
APPROVED ORIGINAL IS ON FILE IN THE ENGINEER'S OFFICE.



SHEET 42

1.	ANDREW CLARKE, PLS & PE - GENERAL REVIEW	5/4/18	D.C.B.	A.B.C.
NO.	REVISION	DATE:	BY:	APP'D

DIVISION OF TAXATION,  
SIGNED BY:  
RICHARD F. SMITH JR.,  
APPROVED BY:  
SUE DAVISON, CTA  
FEBRUARY 13, 2012, SERIAL # 921.

**TAX MAP**  
BOROUGH OF MADISON  
MORRIS COUNTY, NEW JERSEY  
SCALE: 1"=100' DATE: 5-2-07  
RICHARD F. SMITH, JR.  
PROFESSIONAL LAND SURVEYOR NO. 24GS02504800  
28 SCHUYLER PLACE  
MORRISTOWN, NJ 07960

SHEET 43